

# Baltimore SSO

## Site Investigation Report

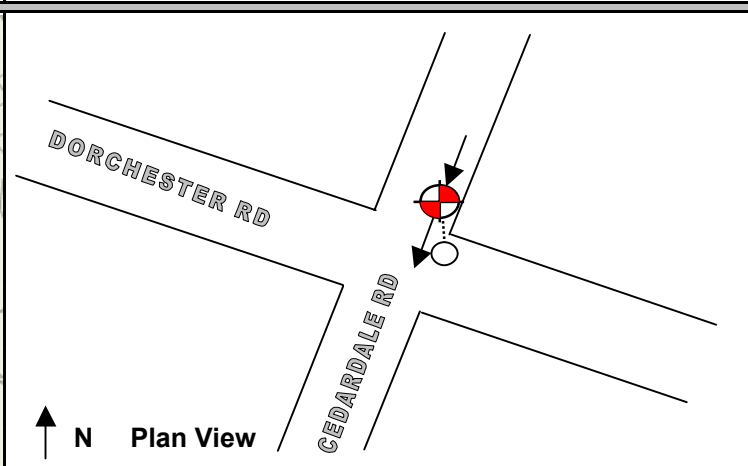
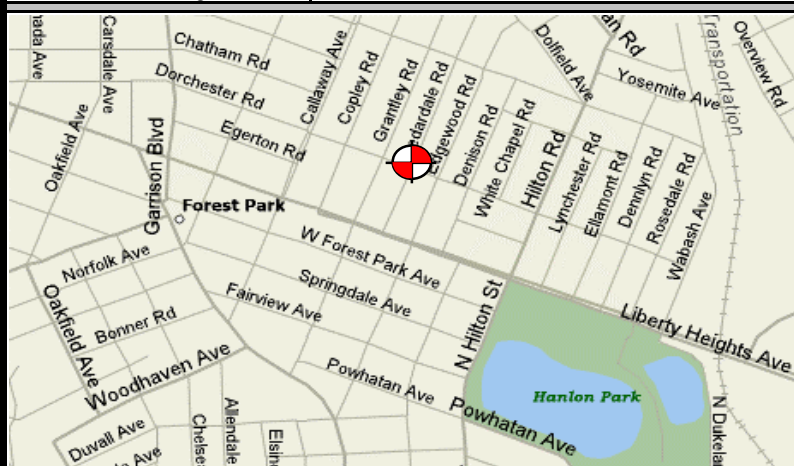


a division of ADS Corporation

FM Initials: DF

Project: 10 Gwynns Run System Improvements

Site Name:	10_103SOF	Monitor Series:	4000 WR	Monitor S/N:		Manhole #:		<b>Investigation Information:</b> Upstream Input: (L/S, P/S) DNI Upstream Manhole: Downstream Manhole: Depth of Flow: 1" + - .5 Description of Site Hydraulics: Turbulent flow in 8-in. sewer. Overflow pipe is dry.
Address / Location:	Dorchester & Cedardale Roads	Map Page #:		Map Grid #:				
		Pipe Height:	12"	Pipe Width:	12"			
Access:	Drive	IP Address:	CDPD					
		GPS Coords:	N DD.dddd 39 19.627		W DD.dddd 076 40.483			
Date/Time of Investigation:	2/16/2005							

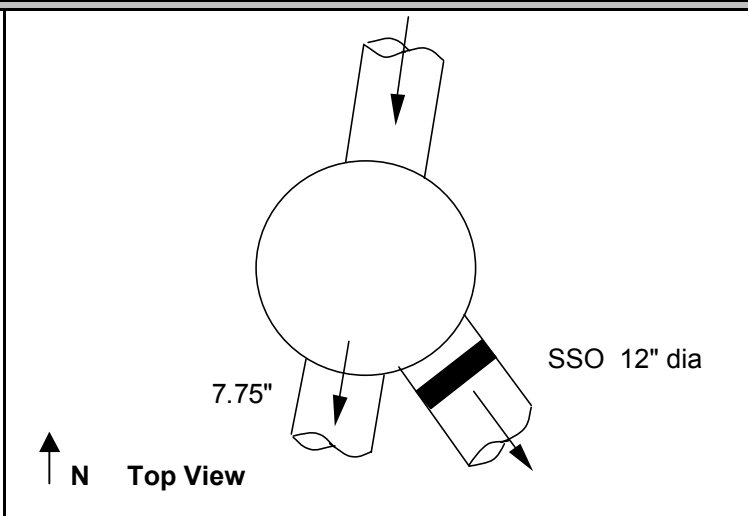
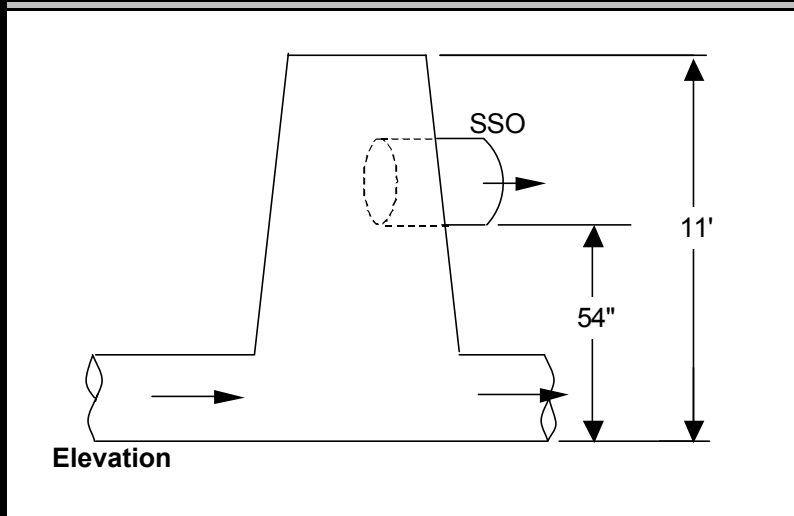


<b>Manhole Information:</b>
Manhole Depth: 11'
Manhole Material / Condition: Coated / Fair
Active Drop Connections? No

System Character:
<input checked="" type="checkbox"/> Residential
<input type="checkbox"/> Commercial
<input type="checkbox"/> Industrial

**Notes:** 8-in. Influent pipe is broken with pieces missing. 8-in. effluent pipe is lined. Sensors located in overflow pipe.

<b>Legend:</b>
Cast Iron Flap Valve
Sensor Location
N.T.S.- Not to scale



The monitoring period was suspended as of March 31, 2006.